

## Directions to the 2009 Conference

The 2009 Sol Adler Conference will be held at the Crowne Plaza Hotel, located at 401 West Summit Hill Dr. in downtown Knoxville.

### *From I-40 East*

I-40 East exit #388 Downtown/Henley St. Stay right when off ramp splits. Turn left at light (Summit Hill). Hotel will be through 3 lights on left.

### *From I-40 West*

I-40 West exit #389 Broadway/Hall of Fame Dr. Turn Left onto Hall of Fame Dr. Turn right at 5th light onto Summit Hill. Hotel will be through 3 lights on right.

WEB	www.crowneplaza.com
RESERVATION	1-877-2-CROWNE
FRONT DESK	865-522-2600
FAX	865-523-7200



The University of Tennessee-Knoxville is approved by the Continuing Education Board of the American Speech-Language-Hearing Association (ASHA) to provide continuing education activities in speech-language

pathology and audiology. See course information for number of ASHA CEUs, instructional level and content area. ASHA CE Provider approval does not imply endorsement of course content, specific products or clinical procedures.

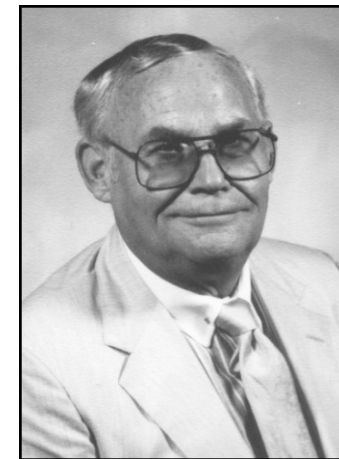
This course is offered for .6 CEUs, (Intermediate level Professional area).



Sol Adler Memorial Conference  
Dept. of Audiology and Speech Pathology  
578 South Stadium Hall, UT  
Knoxville, TN 37996-0740



# The Fifteenth Annual SOL ADLER Memorial Conference



*Monday, March 9th, 2009*

*The University of Tennessee  
The Crowne Plaza Hotel,*

Sponsored by:  
The University of Tennessee  
Department of Audiology and  
Speech Pathology

THE UNIVERSITY of  
**TENNESSEE**   
KNOXVILLE

# The Fifteenth Annual Sol Adler Memorial Conference

## Registration Options

1. Mail—578 South Stadium Hall  
Knoxville, TN 37996-0740  
ATTN: Alesia Newby

2. On-site Registration

Name: \_\_\_\_\_

Organization: \_\_\_\_\_

Address: \_\_\_\_\_  
\_\_\_\_\_

Phone: \_\_\_\_\_ Email: \_\_\_\_\_

Registration includes continental breakfast, registration material, and handouts. Check one of the following:

Professional \$80 (After Feb 15th: \$100) AuD  SLP   
Student \$30 (After Feb 15th: \$50) AuD  SLP

Method of Payment:

Check  Cash (on-site)

Make Checks to: University of Tennessee

**Cancellation Policy:** Your registration, minus a \$25 processing fee, will be refunded if it is necessary for you to cancel before February 15th. No refunds will be made after that time. Substitutions are welcome with prior notice.

## Monday, March 9th, 2009

### Audiology: Dr. Susan Scollie

8:00 - 8:30 AM	Registration & Breakfast
8:30 - 10:15	The DSL Method Version 5. What's in it and How Does it Work?
10:15 - 10:30	Break
10:30 - 12:00	The DSL Method Version 5: Protocols
12:00 - 1:30 PM	Lunch ( <i>on your own</i> )
1:30 - 3:00	Multichannel Frequency Compression: Fitting Rationale
3:00 - 3:15	Break
3:15 - 4:00	Multichannel Frequency Compression: Outcomes
4:00 - 4:30	Questions

### Speech-Language Pathology:

#### Dr. Julie J. Masterson

8:00 - 8:30 AM	Registration & Breakfast
8:30 - 10:15	Overview: Incidence of Reading Problems-What is the Role of the SLP in Written Language?
10:15 - 10:30	Break
10:30 - 12:00	Factors that Influence Spelling and Word-Level Reading
12:00 - 1:30 PM	Lunch ( <i>on your own</i> )
1:30 - 3:00	Assessment: Word-Level Reading Testing
3:00 - 3:15	Break
3:15 - 4:15	Intervention/Instruction: Clinical and Classroom-Based Procedures
4:15 - 4:30	Questions

## Dr. Susan Scollie, Ph.D.

Desired Sensation Level (DSL) v5

Dr. Susan Scollie is an Assistant Professor at the National Centre for Audiology of Western Ontario in London, Ontario, Canada. She collaborates with Richard Seewald, Sheila Moodie, and Marlene Bagatto in the development of the recently released version 5.0 of the Desired Sensation Level (DSL) Method for hearing aid fitting. Her current research focuses on the evaluation of digital signal processing for high frequency hearing losses, sound localization in children, and the prediction of speech recognition scores using the Speech Intelligibility Index.



The Desired Sensation Level (DSL) prescription was first proposed for use with linear gain instruments and the pediatric population. Since its introduction in the late 1980's, several revisions have been made in order to accommodate the changing faces of technology and clinical practice. The most recent revision produced DSL v5, which includes emphasis on multi-channel compression hearing instruments, and clinical procedures for use with infants. This presentation will introduce evidence and rationale behind DSL v5, and review the clinical protocols recommended for its use.

## Julie J. Masterson, Ph.D.

Facilitating Reading and Spelling Skills in Authentic Contexts

Dr. Julie J. Masterson is a Professor of Communication Sciences and Disorders at Missouri State University, where she teaches courses in phonology, language-learning disabilities, and research design. Dr. Masterson is an ASHA Fellow, and was ASHA Vice President for Research and Technology from 2001-03. Dr. Masterson has over 100 publications and presentations at professional conferences in the areas of spelling, child language, phonology, and technology. She served as President of the Council of Academic Programs in Communication Sciences and Disorders 2006-07.



An individual's reading and spelling performance are influenced by cognitive abilities, phonological awareness, orthographic knowledge, semantic knowledge, morphological awareness, and the ability to store mental graphic representations. This presentation will review methods for identifying spelling errors and determining potential causal or maintaining factors. The presentation will focus on activities for word study with an emphasis on use of the skills in authentic reading and writing contexts.